

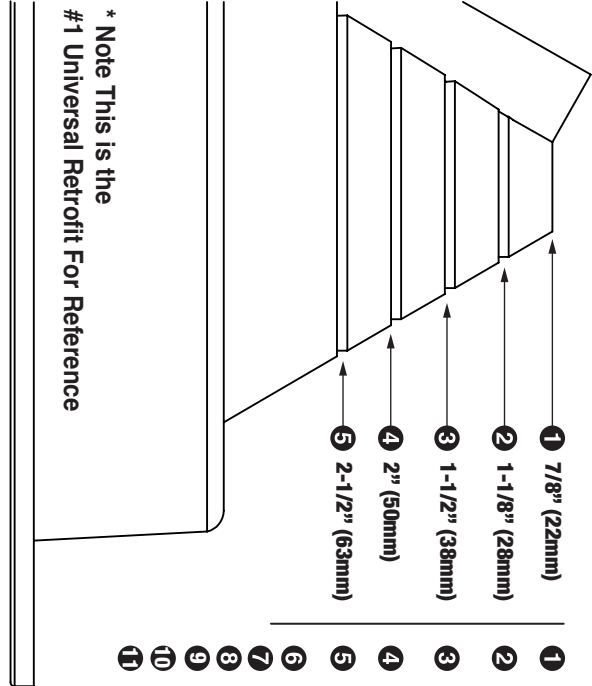
# Universal Retrofit Master Flash®

## Universal Retrofit Size and Trimming

Universal Retrofit Pipe Range

#1	#2	#3
1 7/8" (22mm)	1 2" (50mm)	1 3-1/4" (82mm)
2 1-1/8" (28mm)	2 2-3/8" (60mm)	2 4" (101mm)
3 1-1/2" (38mm)	3 2-3/4" (69mm)	3 4-5/8" (117mm)
4 2" (50mm)	4 3-1/4" (82mm)	4 5-1/4" (133mm)
5 2-1/2" (63mm)	5 3-7/8" (98mm)	5 6" (152mm)
	6 4-1/2" (115mm)	6 6-1/2" (165mm)
	7 4-7/8" (123mm)	7 7" (177mm)
	8 5-1/4" (133mm)	8 7-1/2" (190mm)
	9 5-3/4" (146mm)	9 8" (203mm)
	10 6" (155mm)	10 9" (228mm)
	11 6-1/2" (165mm)	11 9-1/2" (228mm)
		12 10" (254mm)

\* Note This is the #1 Universal Retrofit For Reference

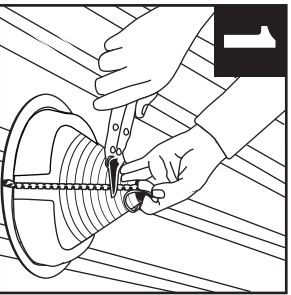


**Base Dimension: #1 6-1/4" (158mm) | #2 10-3/4" (273mm) | #3 14-1/2" (368mm)**

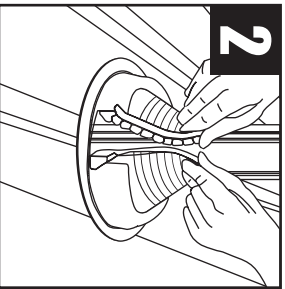
\* Find pipe size in table and trim Universal Retrofit Master Flash® as shown on outline. • Use one size larger Universal Retrofit Master Flash® on steep roofs or deep corrugation.  
\* Cut the flashing at least 5% less than the pipe Outer Diameter

**5 Easy Steps Installation Materials:** Universal Retrofit | (1) Stainless Steel Grippers | Fasteners | Washers | Pliers | Snips/Scissors | Measuring Tape  
Marker/Pencil | Sealant

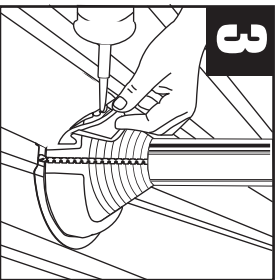
### Measure & Trim



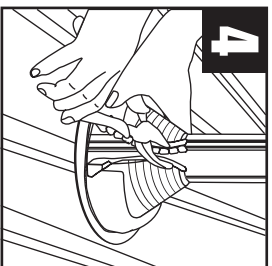
### Wraparound



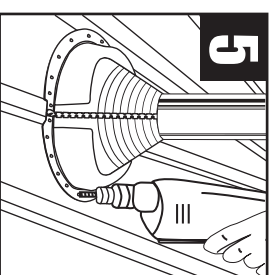
### Seal



### Crimp



### Complete



Note: Properly installed the base with Master Seal® Bonded Washers and fasteners. Fasteners should be 1" - 1-1/2" apart around the entire base for a tight secure seal.



Installation Video: <http://www.aztecwasher.com/installationvideos>

Universal Retrofit Master Flash® is a product of Aztec Washer Company 5/2023

Installation Guides



20 YEAR WARRANTY

