

# Mini-Port Master Flash<sup>®</sup>

## INSTALLATION GUIDE

### "2 Port Design" Handling Many Jobs Multiple Functions

Advanced Ozone Resistance tested to...		EPDM 70 hour @ 500 pphm	HIGH TEMP GRAY SILICONE 70 hour @ 500 pphm
High Temperature Resistance Tested to	Intermittent Continuous	+135°C (+275°F) +100°C (+212°F)	+260°C (+500°F) +225°C (+437°F)
Low Temperature Resistance tested to...		-55°C (-67°F)	-74°C (-101°F)
Compression Set Maximum...		25%	50%

\*Complete specification data and testing methods are available upon request.

### Accommodates:

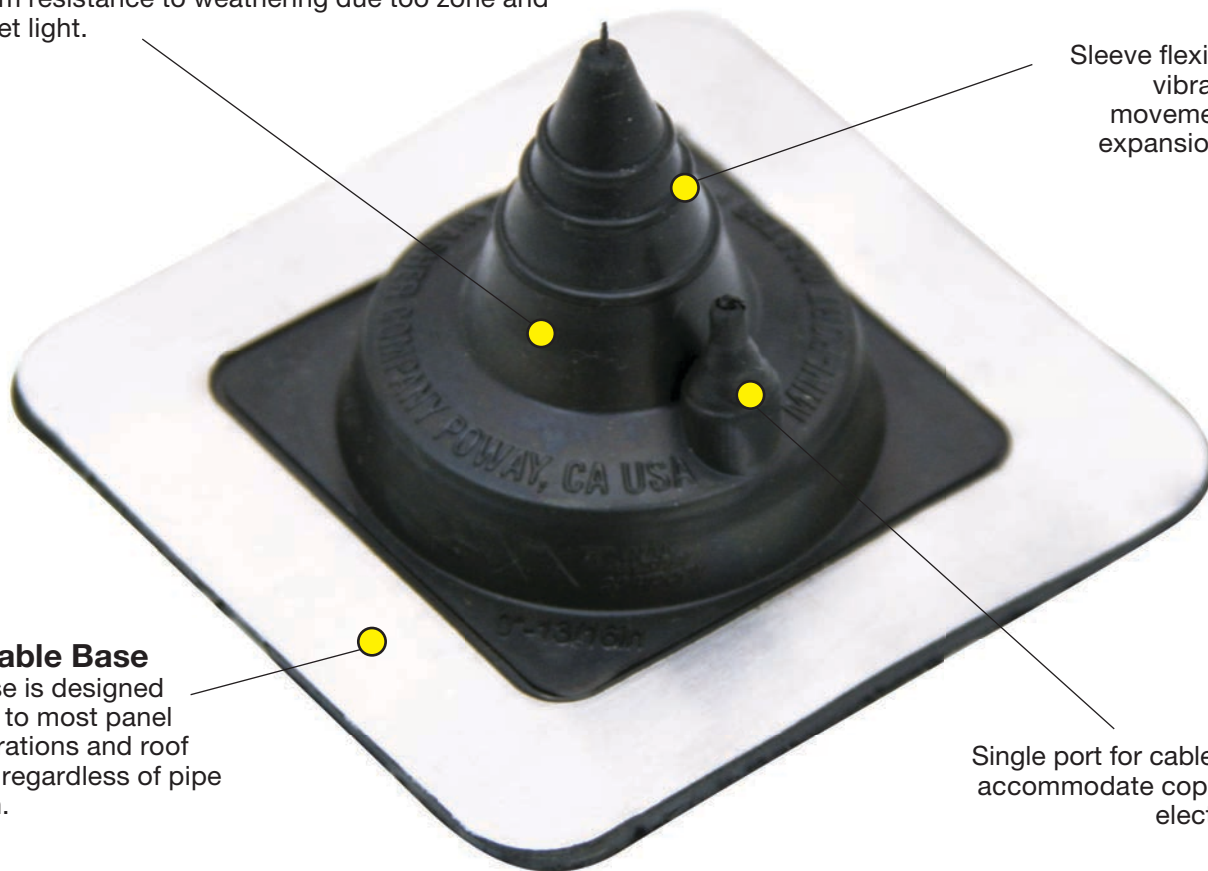
**Center port: Closed - 7/8" (0 - 22mm) pipe / cable**

**Side Port: 1/64" - 3/8" (1 - 9mm) pipe / cable**

### Weather Protection

**Made of EPDM or High Temp Red Silicone,**

These flashings are compounded specifically for maximum resistance to weathering due to ozone and ultraviolet light.

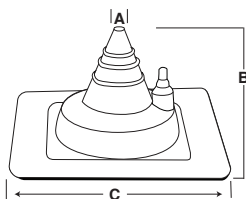


Sleeve flexibility absorbs vibration and pipe movement caused by expansion/contraction

### Adaptable Base

The base is designed to mold to most panel configurations and roof pitches regardless of pipe location.

Single port for cables or wires to accommodate copper pipe and electrical cabling



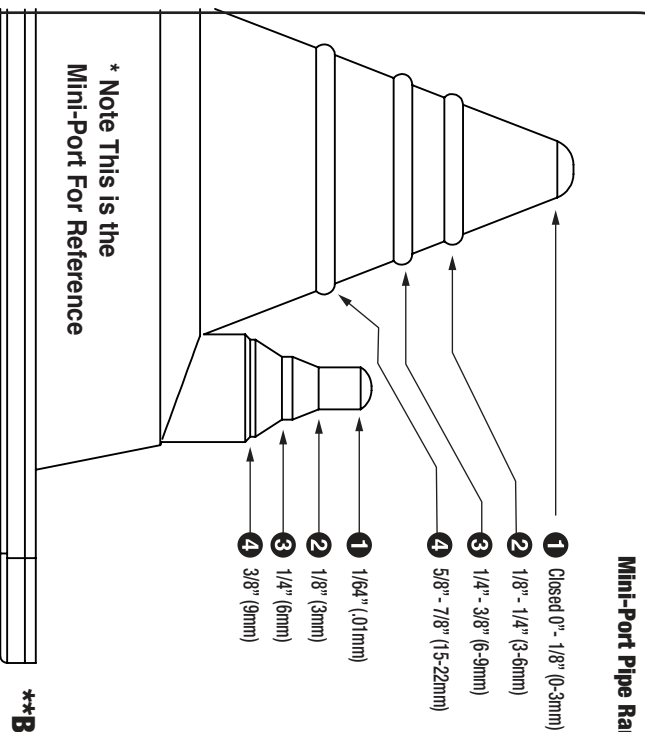
### Mini-Port Pipe Range: Closed - 7/8" (0 - 22mm)

COMPOUND	PART NO.	FLASHING DETAILS	PORT
Black EPDM	MP051BA	A-Top opening diameter - Closed	1/64"-3/8"
Gray EPDM	MP051GA	B-Cut to suit pipe size - Closed- 7/8" (0-22mm)	
Gray Silicone	MP052GX	C-Base dimensions - 3" (76mm)	

# Mini-Port Master Flash®

INSTALLATION GUIDE

## Mini-Port Size and Trimming

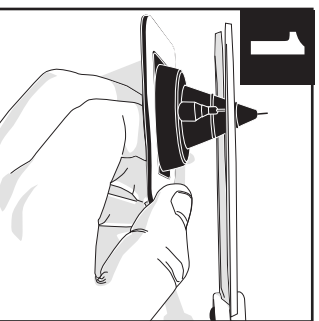


\* Note This is the Mini-Port For Reference

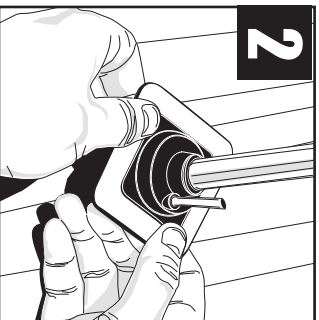
\*\*Base Dimension: Mini-Port 3" (76mm)

\* Find pipe size in table and trim Mini-Port Master Flash® as shown on outline. \* Cut the flashing at least 20% less than the pipe Outer Diameter

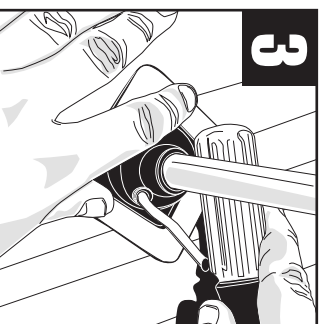
**5 Easy Steps Installation Materials:** Middy Master Flash® | Fasteners | Washers | Snips/Scissors | Measuring Tape | Marker/Pencil | Sealant



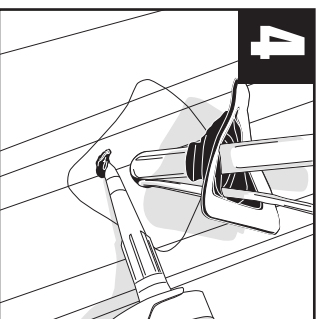
**Measure & Trim**



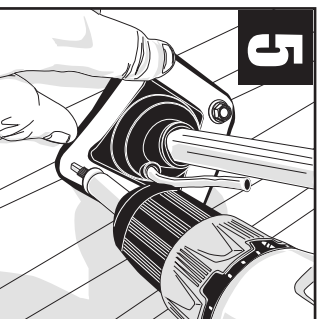
**Slide**



**Form**



**Seal**



**Complete**

Note: Properly installed the base with Master Seal® Bonded Washers and fasteners. Fasteners should be 1" - 1-1/2" apart around the entire base for a tight secure seal.



**Installation Video:** <http://www.aztecwasher.com/installationvideos>

Mini-Port Master Flash® is a product of Aztec Washer Company 5/2023



Installation Guides