

#2 Vent Master Flash®

Specifically designed for the Metal Roofing Industry,

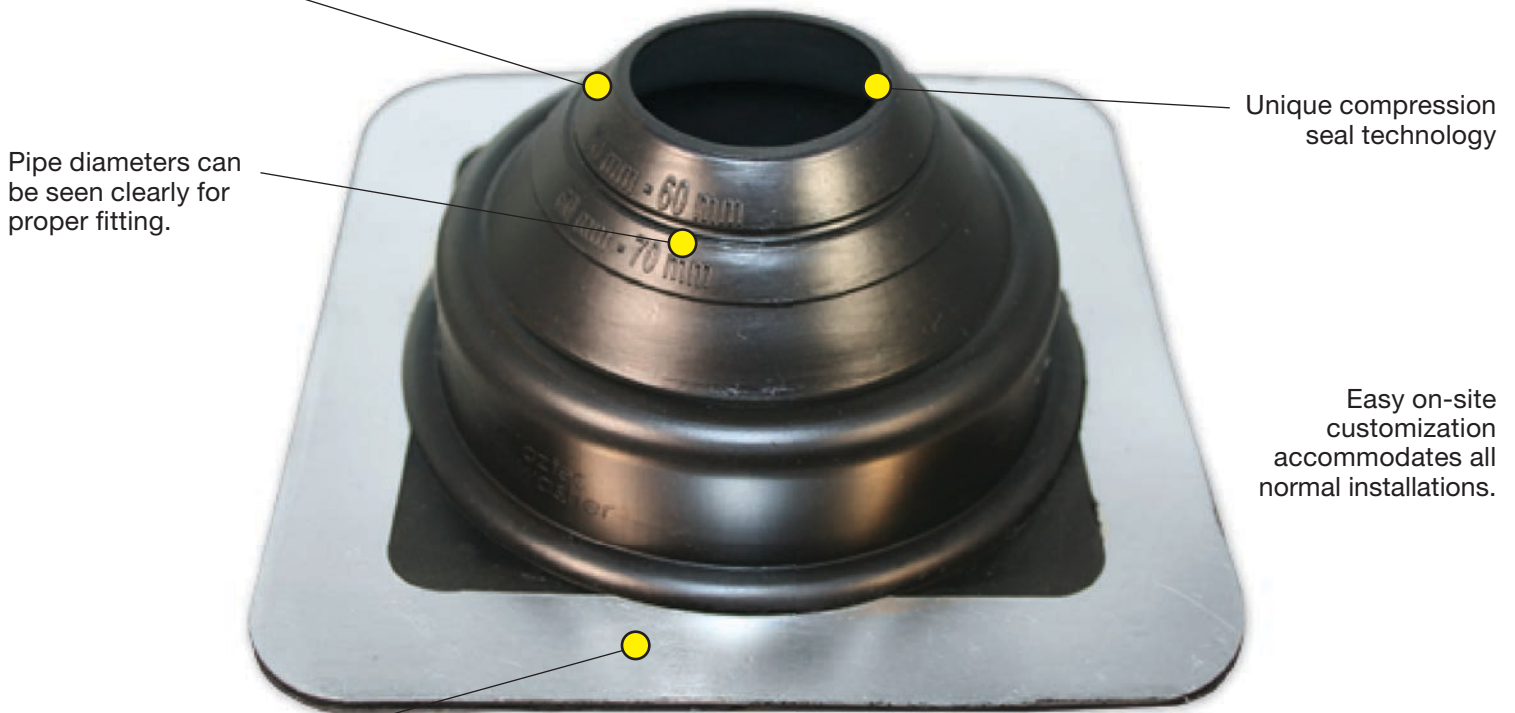
Advanced Ozone Resistance tested to...		EPDM 70 hour @ 500 pphm	HIGH TEMP RED SILICONE 70 hour @ 500 pphm
High Temperature Resistance Tested to	Intermittent Continuous	+135°C (+275°F) +100°C (+212°F)	+260°C (+500°F) +225°C (+437°F)
Low Temperature Resistance tested to...		- 55°C (-67°F)	- 74°C (-101°F)
Compression Set Maximum...		25%	50%

*Complete specification data and testing methods are available upon request.

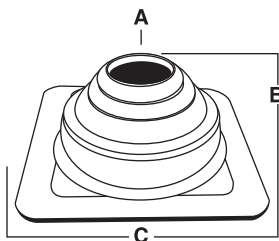
Weather Protection
Made of EPDM or High Temp Red Silicone,
 These flashings are compounded specifically for maximum resistance to weathering due to ozone and ultraviolet light.



Accommodates:
1-7/16" - 2-3/4" pipes



Adaptable Base
 The base is designed to mold to most panel configurations and roof pitches regardless of pipe location.

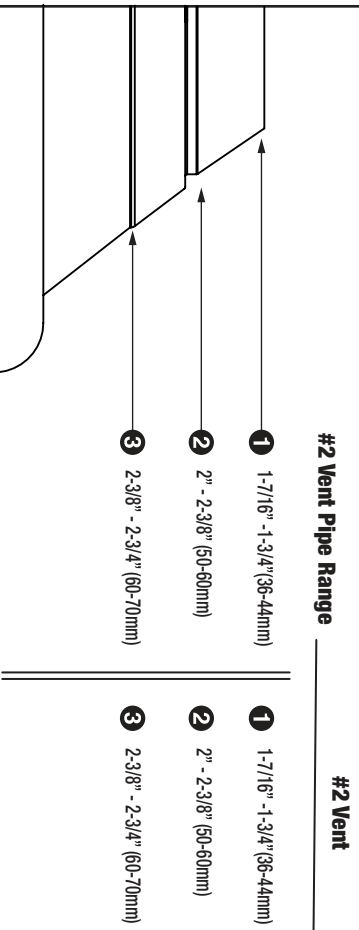


#2 Vent Pipe Range: 1-7/16" - 2-3/4"

COMPOUND	PART NO.	FLASHING DETAILS
Black EPDM	SV201BA	A-Top opening diameter - 1-7/16" (36mm)
Gray EPDM	SV201GA	B-Cut to suit pipe size - 1-7/16" - 2-3/4" (36-70mm)
Red Silicone	SV202RA	C-Base dimensions - 6" (152")

#2 Vent Master Flash®

#2 VENT Size and Trimming



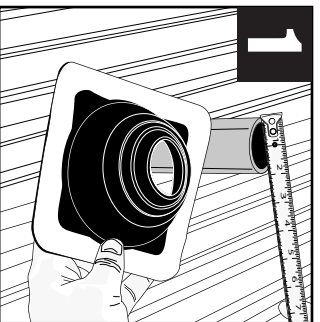
* Note This is the #2 Vent For Reference

**Base Dimension: #2 Vent 6-1/8" (155mm)

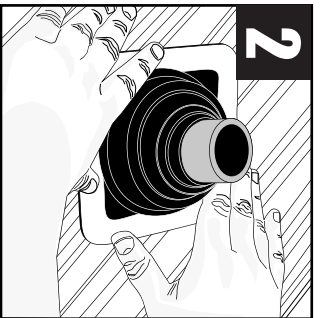
* Find pipe size in table and trim #2 Vent Master Flash® as shown on outline. • Cut the flashing at least 20% less than the pipe Outer Diameter

5 Easy Steps Installation Materials: #2 Vent Master Flash® | Fasteners | Washers | Snips/Scissors | Measuring Tape | Marker/Pencil | Sealant

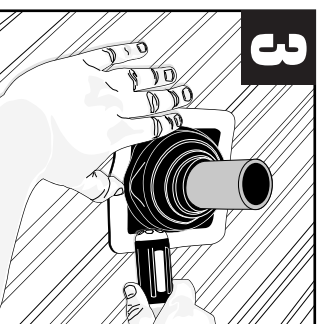
Measure & Trim



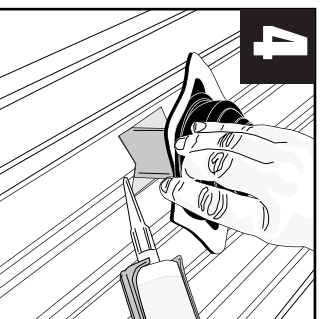
Slide



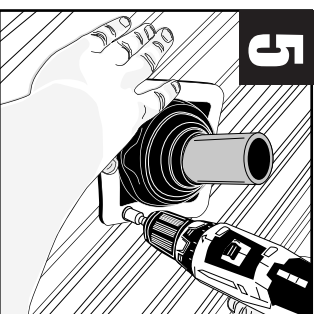
Form



Seal



Complete



Note: Properly installed the base with Master Seal® Bonded Washers and fasteners. Fasteners should be 1" - 1-1/2" apart around the entire base for a tight secure seal.



Installation Guides



Installation Video: <http://www.aztecwasher.com/installationvideos>

#2 Vent Master Flash® is a product of Aztec Washer Company 5/2023