

# Extreme Angle Master Flash®

## Specifically designed for Metal Roofing Industry

For applications with a 3/12 to 16/12 pitch, while accepting & responding to the most commonly encountered pipe penetrations.

Advanced Ozone Resistance tested to...		EPDM 70 hour @ 500 pphm	HIGH TEMP GRAY SILICONE 70 hour @ 500 pphm
High Temperature Resistance Tested to	Intermittent Continuous	+135°C (+275°F) +100°C (+212°F)	+260°C (+500°F) +225°C (+437°F)
Low Temperature Resistance tested to...		-55°C (-67°F)	-74°C (-101°F)
Compression Set Maximum...		25%	50%

\*Complete specification data and testing methods are available upon request.



Pipe diameters can be seen clearly for proper fitting.

Unique compression seal technology

### Adaptable Base

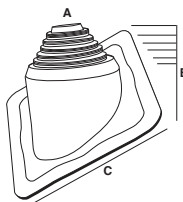
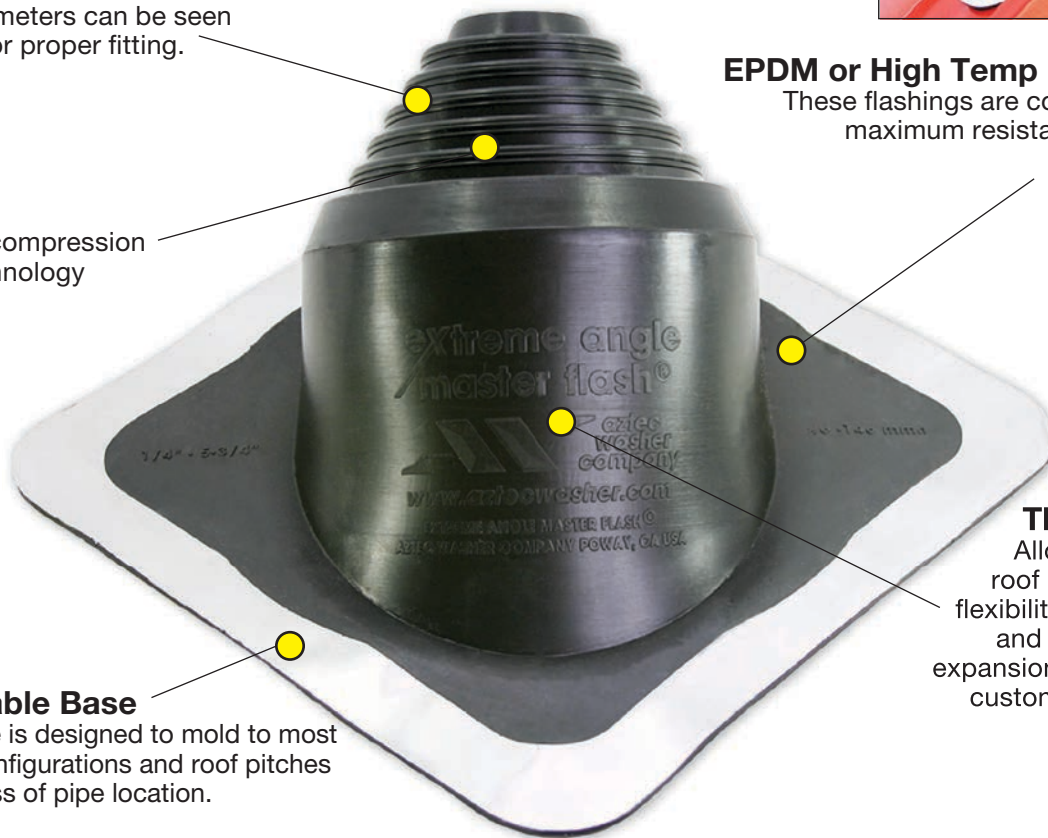
The base is designed to mold to most panel configurations and roof pitches regardless of pipe location.

### EPDM or High Temp Red or Gray Silicone,

These flashings are compounded specifically for maximum resistance to weathering due to ozone and ultraviolet light.

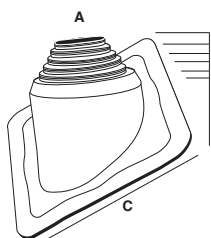
### The built in 12/12 pitch

Allows to handle any extreme roof pitch (3/12 - 16/12), sleeve flexibility accommodates vibration and pipe movement caused by expansion/contraction. Easy on-site customization accommodates all normal installations.



### #1 Extreme Angle Pipe Range: Closed - 5-3/4" (0 - 146mm)

COMPOUND	PART NO.	FLASHING DETAILS
Black EPDM	EA101BA	A-Top opening diameter - Closed
Red Silicone	EA102RA	B-Cut to suit pipe size - Closed- 5-3/4" (0 -146mm)
Gray Silicone	EA102GX	C-Base dimensions - 11" (279mm)



### #2 Extreme Angle Pipe Range: 4" - 8" (101 - 203mm)

COMPOUND	PART NO.	FLASHING DETAILS
Black EPDM	EA201BA	A-Top opening diameter - 4" (101mm)
Red Silicone	EA202RA	B-Cut to suit pipe size - 4"- 8" (101-203mm)
Gray Silicone	EA202GX	C-Base dimensions - 14-1/4" (362mm)

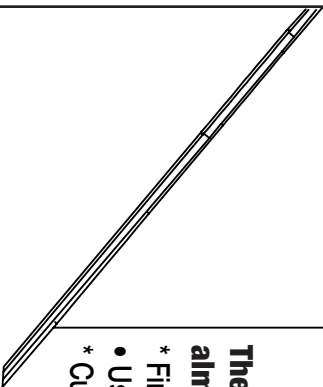
# Extreme Angle Master Flash®

## Extreme Angle Size and Trimming

### Extreme Angle Pipe Range

Closed Top		#1		#2	
1	2-1/2" - 3-1/4" (64-83mm)	1	4" - 4-1/2" (101-114mm)	6	6-5/8" - 7-1/4" (168-184mm)
2	3-3/4" - 4" (83-102mm)	2	4-1/2" - 4-7/8" (114-123mm)	7	7-1/4" - 8" (184-203mm)
3	4" - 4-1/2" (102-114mm)	3	4-7/8" - 5-3/8" (123-136mm)		
4	4-1/2" - 5-1/4" (114-133mm)	4	5-1/2" - 6" (139-152mm)		
5	5-1/4" - 5-3/4" (133-146mm)	5	6" - 6-5/8" (152-168mm)		

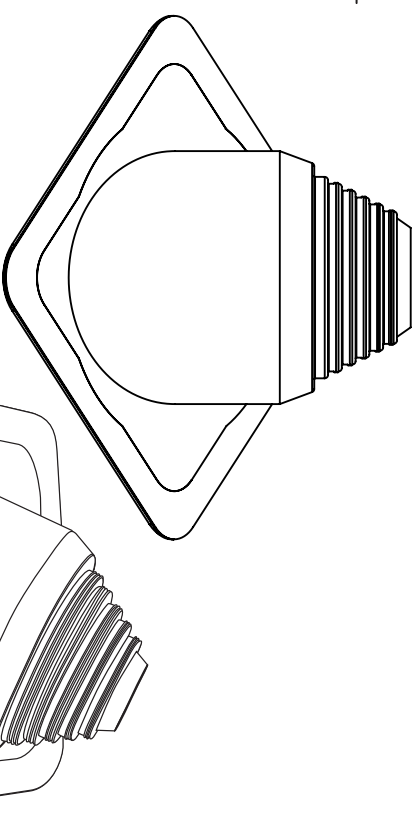
\* Note This is the #1 Extreme Angle For Reference



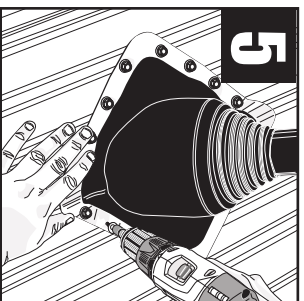
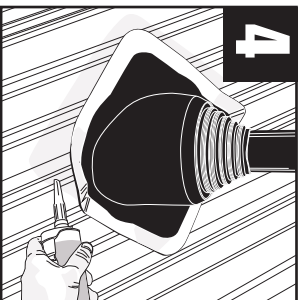
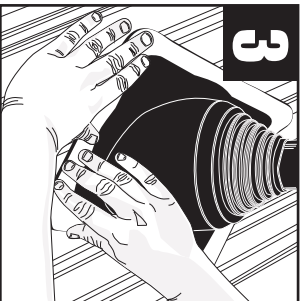
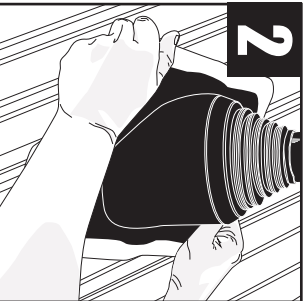
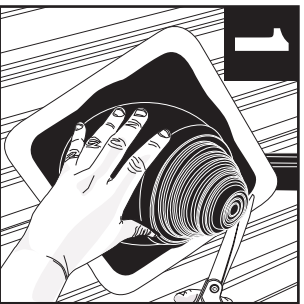
\*\*Base Dimension: #1 1" (279mm) | #2 14-1/4" (362mm)

The built in 20° pitch allows adaptability to almost any roof pitch including 45°

- \* Find pipe size in table and trim Extreme Angle Master Flash® as shown on outline.
- Use one size larger Extreme Angle Master Flash® on steep roofs or deep corrugation.
- \* Cut the flashing at least 20% less than the pipe Outer Diameter



### 5 Easy Steps Installation Materials: Extreme Angle Master Flash® | Fasteners | Washers | Snips/Scissors | Measuring Tape | Marker/Pencil | Sealant



Note: Properly installed the base with Master Seal® Bonded Washers and fasteners. Fasteners should be 1" - 1-1/2" apart around the entire base for a tight secure seal.



Installation Video: <http://www.aztecwasher.com/installationvideos>

Extreme Angle Master Flash® is a product of Aztec Washer Company 5/2023



Installation Guides

