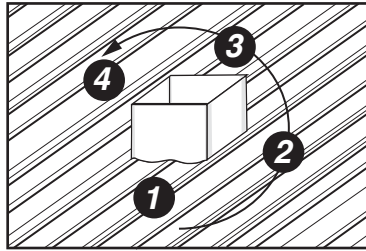
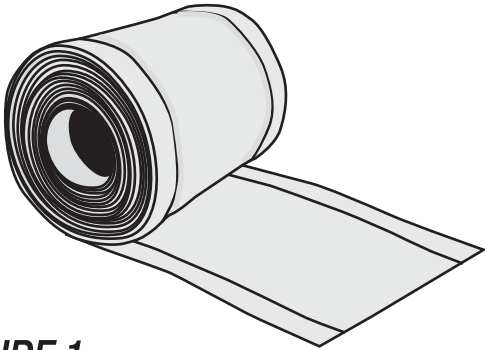




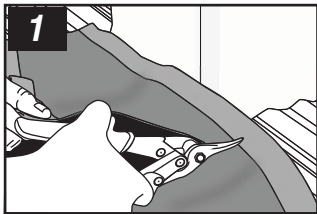
Stretchable Linear Flash Master Flash®

Installation Guide for Skylights and Square Vents

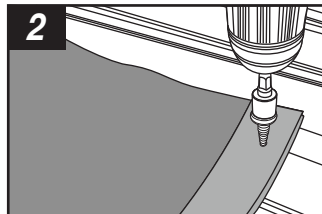


Stretchable Linear Flash (SLF) installation has 4 steps starting from the bottom of application (lower side of the roof slope) going counter clock wise.

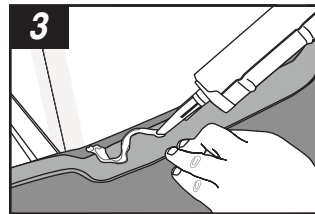
SIDE 1



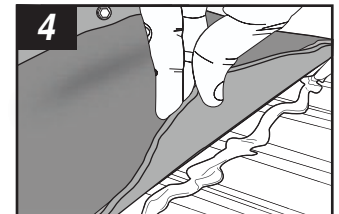
1 Place SLF for appropriate length allow 6" max over lapping on each side of the vent and cut.



2 Secure at the lower corners of the SLF to the roof surface. Fasten by using screws/bonded washers.

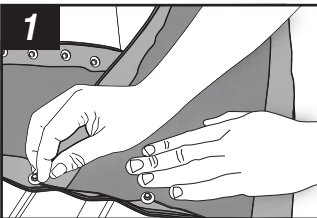


3 Fold back the top of the SLF Apply sealant to the inside of the SLF. Secure the SLF to the vertical vent surface using self-taping screws. The screws should be no more than 1-1/2" to 2" apart.



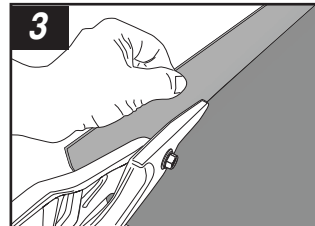
4 Fold the SLF top corners inward on the top of the vertical vent surface. Apply sealant and fasten screws/bonded washers in the valleys of the roof.

SIDE 2

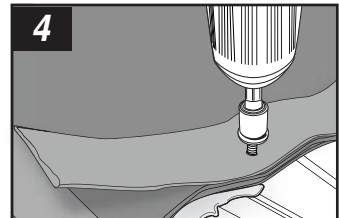


1 Place SLF at the outer edge of side 1. Extend the SLF 6" longer then the vertical edge of the vent and cut.

2 **Repeat installation steps 2,3,and 4 from side 1**



Note* To secure edges cut (2) SLF 12" strips. Cut the SLF coil strips on both SLF strips to equal 4 coil strips to secure edges.

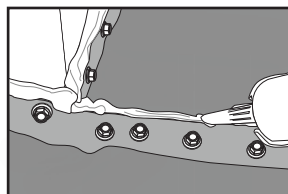


4 Secure the strip to the edges using self-tapping screws/bonded washers. Screw first on the valleys, then on crests to secure the edges.

SIDES 3&4

FINAL STEP

Repeat installation steps from side 2



Apply sealant to all the edges and any open gaps to secure a watertight seal

